

Rhinos, Tigers and Tea



Delight and entertain the whole family on this scenic Indian adventure that encompasses bustling cities, lush jungles, and jagged mountaintops. Immerse yourself in the hustle and bustle of Delhi, where centuries of Indian history come together in a jumble of buildings that highlight India's rich cultural heritage and colonial influence; explore the forests and grasslands of India's jungles as you set out in search of tigers, monkeys, sloth bears at Kanha and Kaziranga National Parks; stop-off in Kolkata en route to Glenburn Tea Estate, situated in magnificent scenery among the rolling foothills of the Himalayas; and roam acres of tea fields and private forests. During the itinerary, you will have the chance to explore your surroundings with a choice of outdoor adventures, from hikes to fishing trips and river rafting.

Tour highlights:

- Take in the sights and sounds of Delhi
- View exotic Indian wildlife on game drives with trained naturalists at Kanha National Park
- Visit Kolkata, once the capital city of British India and also the Gateway to India until 1912
- Visit Kaziranga National Park, a World Heritage Site which hosts two-thirds of the world's One-horned Rhinoceroses
- Relax at Glenburn, a heavenly plantation retreat situated on a hillock high in the Himalayas, above the banks of the River Rungeet, and overlooked by the mighty Kanchenjunga mountain range.

Your Financial Protection

All monies paid by you for the air holiday package shown [or flights if appropriate] are ATOL protected by the Civil Aviation Authority. Our ATOL number is ATOL 3145.

For more information see our booking terms and conditions.

Day by day itinerary

Day 1 : Arrive Delhi

On arrival at Delhi International Airport you will be met by your guide and transferred to the Taj Mahal Hotel for two nights in a deluxe room (BB).

Taj Mahal Hotel

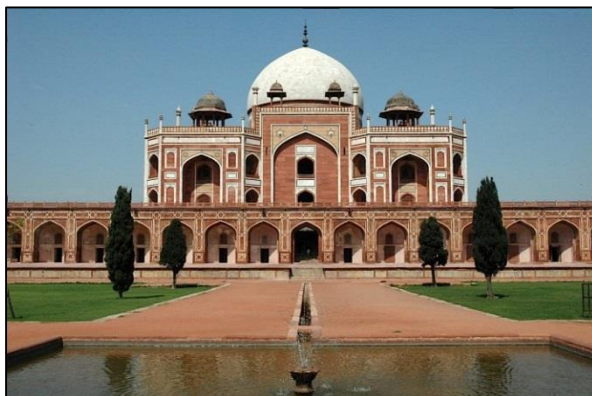
Located in residential New Delhi, the Taj Mahal Hotel blends old-world grace and charm with contemporary comforts first-class amenities. A large hotel, with 5 restaurants, two bars, and a selection of rooms and suites, the Taj Mahal Hotel is one of New Delhi's most impressive accommodations.



Day 2: Delhi

After breakfast set off on a guided sightseeing tour (by rickshaw) of Chandni Chowk, once one of the grandest of markets in India. Perennially choked with traffic, Chandni Chowk remains as busy today as one imagines it was in its heyday in the 17th and 18th centuries, and still retains much of its historical character.

While exploring the market, take the time to visit Jama Masjid (1656 AD), the largest and grandest mosque in India, and the last architectural achievement of the Mughal Emperor, Shahjahan.



Following lunch you will drive through Lutyen's Delhi, passing Rashtrapati Bhawan, the India Gate and the Old Secretariat and Humayun's Tomb.

A UNESCO world heritage site, Humayun's tomb is an extensive collection of buildings built for the Mughal Emperor Humayun, after being commissioned by his wife Hamida Banu Begum in 1562. It was the first garden-tomb to be built in India, and is located in Nizamuddin East. Its distinctive design and structure, as

well as its red sandstone building blocks, would inspire later Mughal architecture.

Day 3 : Delhi – Kanha National Park

This morning you will transfer to Delhi airport to check in for the flight to Raipur (0720/0855).

On arrival in Raipur, you will be met at the airport and transferred by road to Kanha National Park. On arrival, check in at Singinawa Jungle Lodge for four nights in an air-conditioned cottage (FB).

Singinawa Jungle Lodge

Singinawa Jungle lodge is situated near Mukki Gate, Kanha NP, amid 55 acres of grasslands, and with access to several waterholes – perfect for game viewing!

Singinawa offers the comforts of a world-class lodge amid the wild jungle of central India. Its 12 cottages are beautifully decorated and equipped with modern amenities, full en-suite bath and shower, private verandah, fireplaces, and air-conditioning. Facilities at the lodge include a swimming pool, spa and bar.

This afternoon set out on your first game drive into Kanha National Park. The game drives take place in shared open 4x4 vehicles.



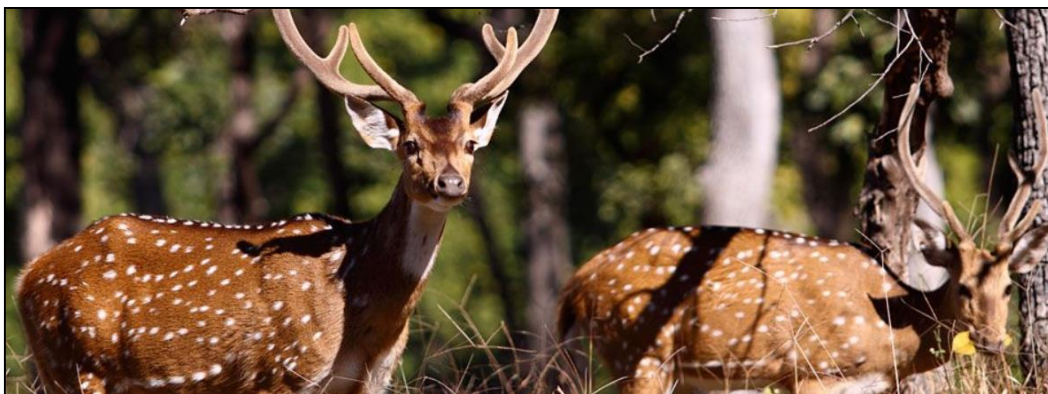
Kanha National Park

Prime tiger territory, Kanha National Park was one of the first areas to be protected under Project Tiger, which endeavours to preserve this magnificent animal in its natural habitat. Though many new National Parks have come into existence in India in the years since, Kanha remains a renowned conservation area.

Kanha is beautiful. Dense jungle and bamboo forests are broken up by vast maidans (grass plains), while the Banjar River, which runs through the southern section of the park, provides a vital source of water for the park's varied flora and fauna.

The wildlife in Kanha is stunning. A healthy population of deer and other antelope—including the rare barasingha, or swamp deer—help to support an array of predators, including tiger, wild dog, jackal and leopard.

N.B. While in Kanha NP, don't forget to visit the weekly market at Sarekha and enjoy the vibrant village life.



Days 4 – 6: Kanha National Park

The next two days are taken up with morning and afternoon games drives into Kanha National Park. A naturalist guide will accompany you on all drives, helping to track and increase your understanding of the local wildlife.

The morning drives leave early, usually as dawn is breaking. This is to avoid the heat, and ensure the best wildlife viewings (tigers, like many other predators, are most active in the mornings).

On the afternoon drives, you'll be able to watch the wildlife as it begins to settle down—in the early evening, many creatures often come to the Banjar River to drink. This is also when nocturnal predators begin to prowl; keep an eye out for leopard and listen for the cries of jackal.



Day 7: Kanha - Kolkata

Enjoy a short morning game drive and then return to the lodge for breakfast.

After breakfast you will be transferred by road to Raipur Airport to check in for the flight to Kolkata (1650/1810). On arrival in Kolkata, transfer to Hotel Taj Bengal for one night in a luxury room (BB).

Taj Bengal Hotel

A top 5-star city hotel, the Taj Bengal is situated in downtown Kolkata, just 3km from the city's commercial centre. This is a great location, within walking distance of the National Library, Victoria Memorial, and Horticultural Gardens, among other attractions.

Day 8: Kolkata – Kaziranga National Park

After breakfast you will be transferred to Kolkata airport in time for your flight to Guwahati – 9W619 (1015/1125).

On arrival at Guwahati you will be met and transferred to Kaziranga (approx. 5 hours), where you check in at the Diphlu River Lodge for three nights (FB) including game drives.



Diphlu River Lodge

Perched on the banks of the picturesque Diphlu River, which courses through Kaziranga National Park, Diphlu River Lodge is the perfect escape for those seeking intimacy with the natural world.

With 12 beautifully-furnished cottages overlooking the Diphlu River or surrounding parkland, River Lodge combines top-rate amenities with the thrill of the wild.

Whether it's spotting an Indian rhinoceros in its natural habitat or tracking a tiger on the hunt, Diphlu River Lodge offers exceptional game viewing. Game drives into the park are conducted in 4x4 safari vehicles.



Days 9 & 10: Kaziranga National Park

A refuge for some of India's most impressive mammals, Kaziranga National Park is home to such rarities as one-horned rhino, tiger, swamp deer, wild buffalo, and Asian elephant, as well as sloth bear, boar, and more.

The next two days are free to explore Kaziranga—its marshes, dense jungle, and open grasslands—on guided 4x4 morning and afternoon game drives.

Day 11: Kaziranga National Park - Glenburn

After breakfast you will be transferred to Guwahati Airport to check in for the flight to Bagdogra (1330/1425).

On arrival transfer to the Glenburn Tea Estate and check in for three nights in a suite (FB).

Glenburn Tea Estate

Perched on a high hill, overlooking the mighty Rungeet River and Kanchenjunga, Glenburn is a working tea estate-cum-plantation retreat.

It was founded in the mid-19th century by a Scottish tea company, but is today owned by one of India's most successful tea planting families.

During your stay here you will find plenty to do in the way of activities; choose from private tours of the tea estate to hiking trips along the Rungeet. Day trips to the scenic town of Kalimpong are also possible.



Day 12: Darjeeling

Set off early this morning for Darjeeling, which is only 35 kilometres by road from Glenburn – alternatively you can reach Darjeeling on foot, completing a cross country hike through the forest and the village up to Darjeeling. Let us know in advance if you'd like to do this.



On reaching Darjeeling you are at leisure to explore the mall, the hill town and the Snow Leopard Breeding Centre.

After lunch take the time to visit Ghoom Monastery, which is situated close to the second highest railway station in the world (the highest being Machupichu). If you are interested you can take a train ride in the Heritage steam train (again, let us know in advance and we'll make the necessary arrangements). Late this afternoon visit the Darjeeling Club for tea before returning to Glenburn.

Day 13 : Glenburn

Today is at your leisure. After breakfast, you might like to take a walk through the tea estate. The tour starts with a presentation on the history of Glenburn, and a brief explanation of how tea is planted, nurtured, and finally tasted.

Afterwards, visit the tea nursery, where the estate cultivates its own young tea plants; learn about the different varieties of tea plants and how they are transplanted into the fields when ready.

In the afternoon, perhaps head to the River Rung Dung with a picnic lunch; explore the rock pools, or just relax on the riverfront.

The day ends with a tea tasting session, a chance to appreciate the differences in aroma, flavour and appearance of tea manufactured using various techniques, and during various times of the year.



Day 14 : Glenburn – Delhi

After breakfast at Glenburn, transfer to Bagdogra airport and check in for the flight to Delhi (1505/1725), where you connect with your international flight home.

End of tour.



Price Guide:

*The cost of this safari itinerary is from **£2,995 per person**, based on twin share and subject to availability at the time of booking. For more information, or if you would like to enquire about a tailor-made India holiday combining part or all of the above itinerary, please [contact us](#).*

Includes:

- Accommodation and meals as described
- Internal transfers and domestic flights
- Game drives at Bandavgarh, Kanha and Kaziranga National Parks
- Entrance fees and National Park fees
- English-speaking guides

Excludes:

- International flights
- Meals not specified
- Drinks
- Camera fee wherever levied
- Tips and gratuities
- Travel Insurance – ask us for a quote
- Items of a personal nature

