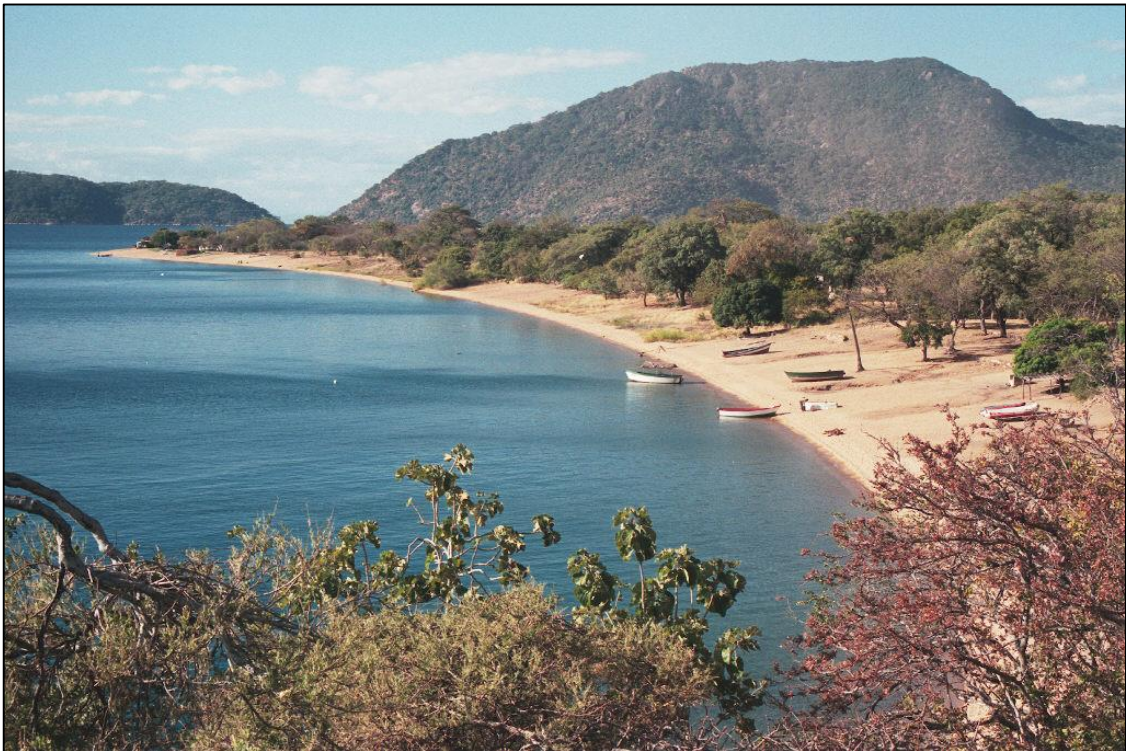




TAILOR-MADE DESTINATIONS

Malawi Small Group Itinerary

A 10 day fully guided trip in an extended safari vehicle, taking in the highlights of the bush, beach and the beautiful highlands!



Outline:

2 nights at Huntingdon House, Satemwa Tea Estates
2 Nights at Thawale Lodge, Majete Game Reserve (FB with 2 game activities)
2 nights Mvuu Camp, Liwonde National park (FB with activities)
3 nights Norman Carr Cottage, Southern Lakeshore (FB with 2 activities)
Guided transfers in 7-Seater Extended Land Rover Defender

Set departures for 2015:

This safari is scheduled to depart at fixed dates throughout the year. It is a small group open safari which anyone can sign up to. For more information and a list of available dates, contact us.

This safari can also be booked as a private departure.

Your Financial Protection

All monies paid by you for the air holiday package shown [or flights if appropriate] are ATOL protected by the Civil Aviation Authority. Our ATOL number is ATOL 3145.
For more information see our booking terms and conditions.

Day One: Satemwa Tea Estates

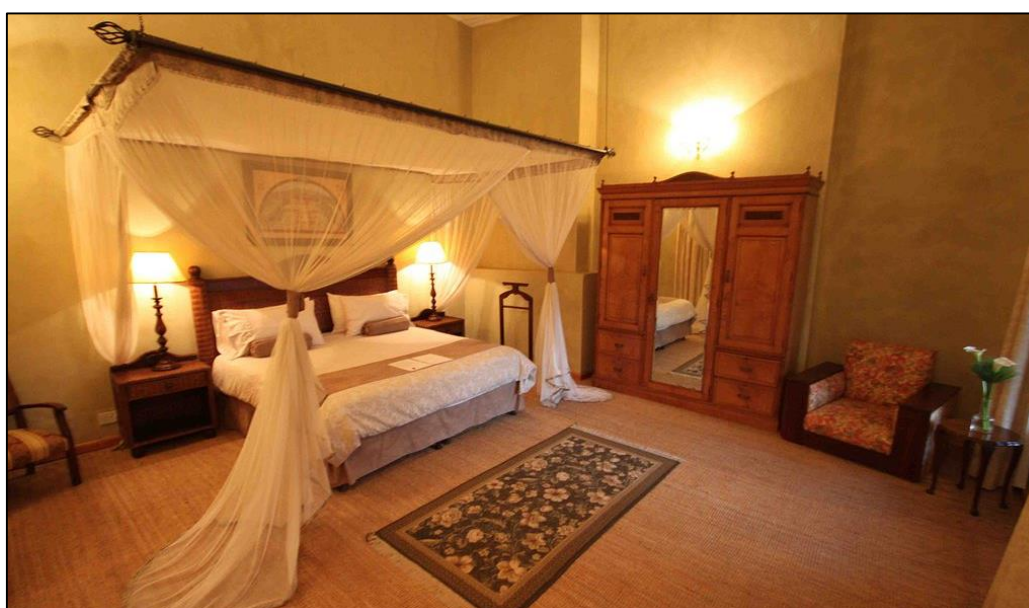
On arrival into Blantyre International Airport, you will be met and transferred to the Satemwa Tea Estates and Huntingdon House (45 mins), where you will stay for two nights (FB).



Huntingdon House

Huntingdon House, a charming colonial-era country home, forms the heart of the Satemwa Estate. Built in 1928, Huntingdon House has been in the Cathcart Kay family for generations, with members of the family still running the tea and coffee production of the estate.

Huntingdon House is a wonderful place to relax, surrounded by manicured gardens and secret patios and terraces waiting to be discovered. The property is perfect for visitors that enjoy a temperate climate and beautiful scenery, which ranges from tropical evergreen forests to riverine thickets and rolling hills. The house offers excellent views of Mount Mulanje and the Lower Shire Valley to the west.



Day Three: Majete Game Reserve

After breakfast you will depart Huntingdon House for Majete Game Reserve (2.5hrs) and check into Thawale Lodge for two nights (FB).

Thawale Lodge

Thawale Lodge is a down-to-earth bush camp providing excellent accommodation in the newly restocked Majete Game Reserve; it is not fenced and so animals regularly visit the camp. Majete has been the centre of an impressive relocation programme, which has brought a wide range of game – including elephant, buffalo, black rhino, sable antelope, zebra, eland, hartebeest and kudu – to the park in impressive numbers. With the Reserve now teeming with game, guests do not have to travel far to enjoy excellent viewing; you can view the wildlife from your private chalet balcony, watching the evening flow of animals come to the waterhole while enjoying a sundowner.



Accommodation at Thawale is in six double and twin tented chalets, each with private veranda overlooking the waterhole. The chalets are spaced out to offer privacy. A communal lapa (traditional lounge area) with a fully staffed kitchen is available in the centre of the camp. Fresh meals are served in the thatched bamboo restaurant and bar with birding veranda.

Your stay includes two game activities, a boat safari & game drive.

Majete Game Reserve

For a long time neglected and crippled by poaching, Majete Wildlife Reserve came under new management in 2003, and since then has undergone a real rebirth. Over 2,000 animals have been reintroduced to the Reserve, including elephant, black rhino, buffalo, zebra, sable antelope, eland, waterbuck, nyala, hartebeest, kudu and many more, making this one of the most densely populated safari game reserves in all of Malawi.

Visitors to Majete have the option to explore the reserve by vehicle – game drives in open vehicles – or on foot. The guided bushwalks are a highlight. You will be led by experienced scouts, who themselves cover the Reserve every day on patrols and are thus best equipped to tell you all about Majete. For the more adventurous there is the option to track elephant on foot – a once in a lifetime experience! Together with two scouts you will search for elephants using a radio transmitter. Once there is a signal you will go on foot into the bush. It is important to be downwind and very quiet, you don't want the elephants to know you are there. They really are wild animals and can be dangerous, but it is a truly impressive experience to be standing just a few metres away from these majestic animals.





Day Five: Liwonde National Park

Depart Thawale Lodge and head towards one of Malawi's finest parks – Liwonde National Park (3.5hrs). You will drive through the Ulongwe village and take a 2 minute transfer by boat across the Shire River to Mvuu Camp. You will stay at Mvuu Camp for two nights (FB).

Mvuu Camp

Mvuu Camp is an excellent option for those who want to enjoy an equally comfortable and remote bush experience.

Mvuu's airy thatched lounge looks out onto the Shire River where crocodile, hippo, elephant and an array of birdlife can be seen.

Dinner is often served in the open boma or on the banks of the river.



Game-viewing at Mvuu Camp is excellent, with the option for boat trips and both day and night games drives. The boating safaris are the highlight bringing you close to elephant and the rich birdlife. Walks with qualified guides can also be arranged.



Liwonde National Park

Liwonde National Park is Malawi's prime wildlife area. The reserve encompasses the wide and scenic Shire River, as well as quiet backwaters and lagoons, marshes, open savanna and floodplain, mopane woodland and hills – varied habitat which supports an incredible diversity of plants, animals and birdlife.

The game at Liwonde includes large breeding herds of elephant, plenty of hippo and crocodile, sable antelope, impala, reedbuck, oribi, leopard, serval and lion. Birdlife is prolific with the park regarded as one of the finest birding spots in Africa – both for the number of species and the relative ease with which the 'specials' can be seen.

The Shire River is Lake Malawi's only exit – making it the largest in the country – and forms the western boundary of the National Park.

Mvu, which means "hippo" in Tonga, is named so because of the large numbers of pods of these water-loving mammals that float in the river. Other big game includes the Black Rhinoceros, introduced into the park from South Africa – they have a successful breeding programme, and are monitored daily. Guests sometimes encounter these wonderful beasts on safari drives.

Day Seven: Lake Malawi

After breakfast you will depart Mvu Camp for the southern lakeshore, you will stay at Norman Carr Cottage for three nights (FB).

Norman Carr Cottage

Norman Carr Cottage is situated on the southern lake shore of Lake Malawi in the beautiful sheltered bay of Namakoma just 15km south of Monkey Bay.



The charming Norman Carr Cottage is situated on a sandy beach, tucked away under a canopy of large indigenous trees – a perfect hideaway of sun drenched beaches and turquoise waters!

Full catered home cooked meals are enjoyed in the open beach dining area overlooking the waters of Lake Malawi. The rooms are spacious and airy with open air showers, king-size beds and coffee/tea making facilities.



Evening and morning boat trips on the lodge boat 'Alfie' provide wonderful opportunities for snorkelling, swimming and feeding the fish eagles. A variety of water sports, including surfing and canoeing, are available.

Day Ten: Homeward

Today you will depart Norman Carr Cottage and head back to Blantyre and the Airport (3 hours). Check in for your onward flights arrangements.

Price Guide:

*The cost of this itinerary is **£2245** per person, based on twin share and subject to availability at the time of booking. For more information, or if you would like to enquire about a tailor-made holiday combining part or all of the above itinerary, please [contact us](#).*

Includes:

- Airport meet & great
- Guided transfers
- Accommodation and meal as per itinerary
- Scheduled game activities in Liwonde, game drive and boat safari at Majete
- Boat transfers at Mvuu (during rainy season)
- Park fees at Majete and Liwonde
- Snorkelling trip and sundowner cruise (weather permitting) at Norman Carr Cottage
- Local drinks at Huntingdon House

Excludes:

- All drinks (ex. at Huntingdon)
- Visa fees if applicable
- Airport departure taxes
- Additional meals/services/activities not mentioned
- Items of a personal nature
- Travel insurance – ask us for a quote