

Namibia Safari Fixed Departures

Low-cost Namibia safaris that depart on fixed dates throughout the year

Contents

Discover Kaokoland	2
Damaraland Wilderness Experience	4
Rivers and Mountains of Damaraland	5
Classic Namibia North-East Camping Safari	7
Skeleton Coast, Desert Elephant, Black Rhino and Himba	8
Epupa and Ovahimba Experience.....	10
Just Ovahimbos	11
Kaokoland and Kunene River	12
Price Guide.....	14



Introduction

These low-cost Namibia safari options will take you to the most remote and scenically beautiful regions of Namibia, including the Skeleton Coast, Damaraland Highlands, Kaokoland, and the northern parks of Kaudom, Mudumo and Waterberg. They are open, small group itineraries departing at fixed dates throughout the year. We can also offer these itineraries (or similar) for private groups at additional cost.

Our camping safaris depart from either Swakopmund or Palmwag Reserve in the Damaraland (with the exception of Classic Namibia, which departs from Windhoek). You will travel in well-equipped 4WD vehicles, accompanied by fully-qualified and knowledgeable guides who will help you make the most of this opportunity to see some of Namibia's great natural wonders.

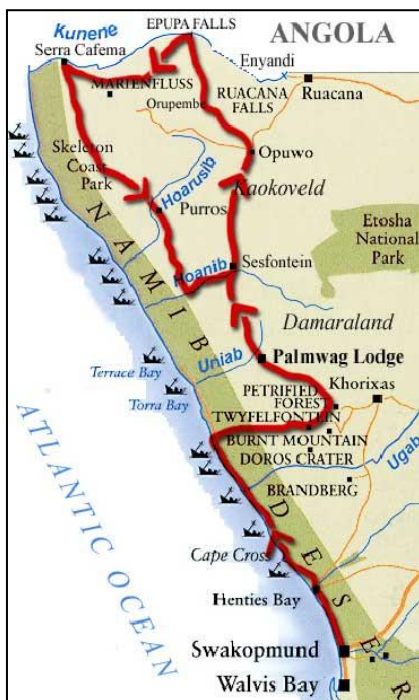
Your Financial Protection

All monies paid by you for the air holiday package shown [or flights if appropriate] are ATOL protected by the Civil Aviation Authority. Our ATOL number is ATOL 3145. For more information see our booking terms and conditions.

Discover Kaokoland

Outline

This guided safari offers you the perfect opportunity to experience Namibia's unspoilt North West. Away from the bustle of the normal tourist routes, you will encounter Namibia's famous desert adapted elephants, the nomadic Ovahimbas, and the mighty Kunene river and its spectacular Epupa waterfalls. The tour ends with a final relaxing overnight at Palmwag Lodge (or similar) before returning back to Swakopmund via Twyfelfontein and its famous rock engravings.



Day 1: Swakopmund / Damaraland

Depart Swakopmund and travel along the Atlantic Coast towards the North. Visit the lichen fields near Wlotzka's Baken before continuing to Henties Bay, a small holiday resort. From Henties Bay, travel onward to the seal colony at Cape Cross. After visiting the seals, the journey continues via Ugabmund to the southern Skeleton Coast Park to inspect a shipwreck. We leave the Skeleton Coast Park in the early afternoon via Springbokwasser, allowing guests to experience the harsh transition from the Namib Desert to the Damaraland highlands with its impressive landscape and rugged valleys. Here you might be able to sight the first springbok, zebra and oryx and, with some luck, the desert elephants. Overnight stay in bungalows at Grootberg Lodge or similar. After enjoying a drink and a delicious supper, guests can luxuriate in the Lodge's cosy atmosphere and let the day's impressions sink in.

Grootberg Lodge

Grootberg Lodge occupies a stunning location in the Hoas Conservancy, Damaraland, situated on the rim of the Grootberg Plateau. It is the first 100% community owned lodge in Namibia, with much of the revenue it generates going to help the local community.

Accommodation is in 12 rock and thatch chalets, all of which are en-suite with shower and toilet. Each of the chalets boasts wonderful views over the gorge, where Black Eagles hunt just below the level of your private deck.



Day 2: Damaraland / Opuwo

After breakfast the journey continues through central Damaraland and the Khowarib Gorge en-route to Opuwo. This breath-taking landscape is home to the Ovahimba tribe, nomads who live according to ancient traditions in the north-west of the country. Open-air camping in the vicinity of Opuwo. Enjoy an ice-cold drink and revel in an intense experience of the Namibian bush while your guide prepares your evening meal on an open fire.

Day 3: Okangwati / Epupa Falls

Drive on via Okangwati. Meet the first nomadic Ovahimbas and their herds of cattle and goat en-route. We travel onwards to the Epupa Falls, past the village of Okangwati – a fascinating landscape, the mighty Kunene River, overgrown banks and magical waterfalls. Explore the waterfalls and enjoy an unforgettable sun downer on one of the viewing points on top of the Falls. Overnight camping.



Days 4 and 5: Kaokoland

After a hearty breakfast we set off. The next two and a half days will take you through the fascinating landscape and valleys of central Kaokoland. Receive a friendly and warm welcome from the inhabitants of a local Ovahimba settlement. Learn about the ancient customs and way of life of this fascinating tribe and explore the village with its traditional huts. Once again camping

in the open with perhaps occasional visits from curious Ovahimba.

Days 6, 7, 8: Van Zyl's Pass / Kuene & Hartmann's Valleys

On the morning of the 6th day we cross the notorious Van Zyl's Pass, a hand-hewn narrow trail which painstakingly winds its way through the largest mountains in this area. Thorough 4 x 4 driving skills and endurance are pre-requisites for the driver. At the end of the trail the valley opens into one of the most awe-inspiring and spectacular views this area has to offer – that across the Marienfluss riverbed. Here man can only feel dwarfed and helpless by comparison. A short rest, then on to the Marien River. Extensive grass plains and abundant trees together with game such as oryx, springbok, ostrich and zebra form part of the environment.



The track continues westward towards the Hartmann's Valley. As we leave behind the mountainous areas of the previous days, the vegetation grows sparser until it blends into the expansive grass plains below. The solitude is awesome. Then suddenly a mountain range materialises out of the blue haze of a breathtaking, lunar landscape. Indescribable contrasts, mountains in different hues, the valleys half blanketed with red dune sand, deep gorges, not a human soul in sight – this is the Kunene Valley part of the Serra Cafema Mountain Range, the highest mountains in south-western Angola which also form the border between Angola and Namibia. Our destination for the next two and a half days is the Kunene River in Hartmann's Valley. Camping on the banks of the river with day excursions exploring the scenic gorges, valleys and desert-like dune fields of this isolated part of the North West.

Day 9: Hoarusib River

Today we bid farewell to the Kunene River and embark on our return journey to Grootberg. The drive progresses along the border of the Skeleton Coast Park into the Hoarusib River. We traverse almost deserted contrasting landscapes, ranging from desert to the Kaoko highland. With a bit of luck the Desert Elephant can be sighted. Camping in the open in the Hoarusib River.



Day 10: Hoanib River Valley

Break up camp and game drive in search of elephants and proceed further south into the Hoanib River. The Hoanib River Valley at times seems frightening and often appears unnavigable. Once in the riverbed we drive in a westerly direction. Abundant tree growth offers the desert elephant a healthy diet and provides shade to a variety of game from the Namibia sun. An overnight camp is erected in one of the side arms of the Hoanib River. It is not unusual for the elephants to pass by the camp during the night.

Day 11: Grootberg

Our last breakfast in the bush. We pack up camp and drive back to Grootberg Lodge via Sesfontein. Spend the rest of the afternoon relaxing at the pool and enjoy an awesome sunset in Namibia's wilderness. Overnight in bungalows.

Day 12: Twyfelfontein

Early departure to Twyfelfontein, to admire the rock engravings. Thereafter we continue via the "Burnt Mountain" to Uis, a deserted mining town. As you pass the highest mountain of Namibia, the roughly 2800 meter high Brandberg, it appears almost surreal. Return to Swakopmund in the late afternoon.

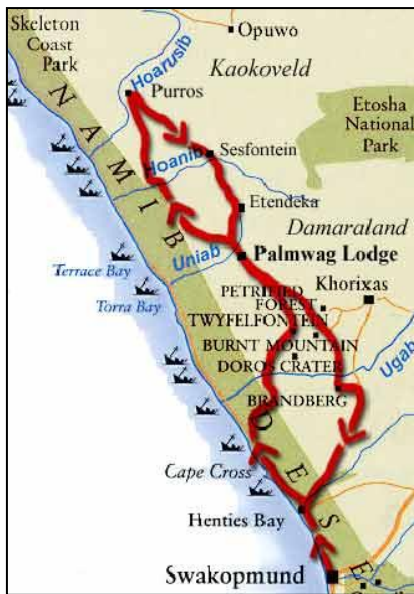


The cost of this itinerary is from £1936 per person, based on twin share and subject to availability at the time of booking. Please see price guide on page 14 for more information.

Damaraland Wilderness Experience

Outline

Experience the very best of Namibia's free-roaming game found outside of a national park amidst the unspoilt nature and spectacular scenery of the former Damaraland. This 9 day tour will take you to the cape fur seal colony at Cape Cross, the Messum Crater, the Ugab and Huab river areas, the Hoarusib River Valley and the game-rich private concession area of Palmwag Lodge. The journey ends with an exciting outing to the private concession area of Etendeka before returning back to Swakopmund via the Skeleton Coast border.



Day 1: Swakopmund / Namib Desert

Departing Swakopmund in the early morning, we travel northwards along the West Coast Recreational Area. We encounter the holiday village of Wlotzkasbaken. After a visit to the Cape Cross Seal Reserve, we leave the main road and start exploring the fascinating gravel plains of the Namib. We head in an easterly direction towards the Messum Crater – an extinct volcanic protrusion with a fascinating geological history – where we are introduced to the unique desert vegetation. Continuing north, we make our way to the Ugab River, a dry seasonal river that flows for only a few days during the rainy season. Here, under giant ana trees, we will pitch our first night's camp. With a bit of luck we might even encounter the desert adapted elephants that inhabit this region. Dinner is prepared over an open fire and the day's sightings and adventures are relived around the dinner table.

Day 2: Doros Crater, Damaraland / Twyfelfontein

After an early breakfast we head further north towards the imposing Doros Crater and the heart of Damaraland. Here our specially modified Land Rovers will be tested as we negotiate some serious off-road tracks. We meander through this prehistoric landscape encountering the incredible wildlife that

has adapted to it. Species that survive here include hartmann's zebra, oryx, springbuck, giraffe, ostrich, black banded jackal, kudu and with a bit of luck, the elusive black rhino. We also spend some time exploring the fascinating rock engravings of the Twyfelfontein Massive. Using ancient watercourses we make our way down to the Huab River and camp wild under a starry sky. Once again, dinner is prepared as you enjoy the silence and solitude of the desert whilst sipping your sundowner drink.



Day 3: Palmwag Concession

Today we enter the Palmwag Concession, a 5500sq km private game area. We spend the day tracking wildlife and visiting the various hidden springs. We also find the last of free ranging black rhino in this area. Wildlife we may encounter here includes lion, cheetah, elephant and various species of plains game. Wild camping in the area.

Day 4: Hoanib River

We keep heading north in the Palmwag Concession towards the Hoanib river. This fascinating river is an eco-system within itself and also the border between Damaraland and the Kaokoveld. Various game species, including elephant meander up and down this river, walking great distances every day to feed and drink from its springs. We camp in one of its beautiful side valleys. It is not uncommon to see elephant stealthily moving past our camp during the night.



Day 5: Hoarusib River

Today we head towards Purros, an Ovaherero settlement in the Hoarusib River. We might encounter some of the nomadic Himba people, depending on the availability of grass and water for their cattle and goats. We also have an opportunity to visit a local school and meet the teachers and pupils. Tonight we camp at a rustic campsite belonging to the local community in the area. Here we have a good opportunity for seeing the desert adapted elephant in this majestic landscape.

Day 6: Hoarusib Wetlands

Spend the morning tracking elephant in this ancient river bed, driving through imposing canyons and ravines as we make our way towards the "clay castles" and wetlands of the western Hoarusib. It is a geological paradise, where many different earth formations and a variety of desert flora can be encountered. We make our way back to our campsite in the late afternoon. Camping at Purros on fullboard.

Day 7: Sesfontein / Etendeka Mountains

Today we start making our way back towards "civilization" via the village of Sesfontein. This was originally a German police fort more than a hundred years ago, and gets its name from the prolific fountains found in the area. We visit the Khowarib Gorge, a narrow gorge in the dry Hoanib River and home to a few Damara and Herero families, making our way into the Etendeka Mountains, where we will spend the night wild camping.

Day 8: Grootberg

Our last day is spent at Grootberg Lodge, perched on the edge of the Grootberg Plateau. Here we will have a last opportunity to search for the elusive black rhino in the ravines and dry rivers of this harsh environment. Overnight at Grootberg Lodge on fullboard.



Day 9: Swakopmund

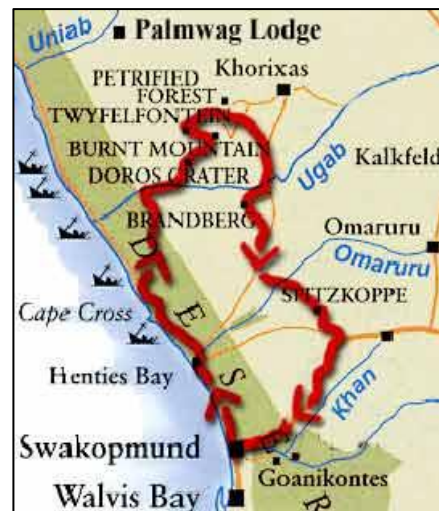
We return to Swakopmund via the village of Uis, an old mining town with majestic views of the Brandberg. We also have an opportunity for shopping for semi-precious stones from vendors along the road, before reaching Swakopmund in the afternoon.

The cost of this itinerary is from £1904 per person, based on twin share and subject to availability at the time of booking. Please see price guide on page 14 for more information.

Rivers and Mountains of Damaraland

Outline

Namibia's most interesting geology and rock formations can be found in the north west of the country. This specialised tour leads the client into some of the oldest and most impressive geological areas of Namibia, including the Messum crater, the Ugab and Huab river formations and terraces, Doros Crater, Twyelfontein and the Etjo sandstone occurrence. From here, you'll travel on past the majestic Brandberg and finally on to Namibia's own "Matterhorn", the spectacular granite formations of the Spitzkoppe.



Day 1: Swakopmund / Namib Desert

Departing Swakopmund in the early morning, we travel northwards along the West Coast Recreational Area. We encounter the holiday village of Wlotzkasbaken. After a visit to the Cape Cross Seal Reserve, we leave the main road and start exploring the fascinating gravel plains of the Namib. We head in an easterly direction towards the Messum Crater – an extinct volcanic protrusion with a fascinating geological history. Here we encounter various abandoned mining ventures where many in the past sought their fortunes. We make our way down to the Ugab River across the ancient Ugab terraces where we will camp for the night. There will be ample opportunity to explore the area on foot and discover the geology of this fascinating region.



Day 2: Doros Crater

Driving down the Ugab River we encounter the fascinating geology of centauries, carved into the canyon walls. We might also encounter some desert dwelling elephants in this prehistoric landscape. Driving across the vast Namib plains we explore various geological phenomena. We pitch camp in the vicinity of Doros Crater and once again explore the surroundings on foot. We pitch our tents and camp overnight under the stars, enjoying the desert solitude.



Day 3: Twyfelfontein

We make our way amongst sandstone outcrops and Basalt plains towards the western reaches of the Huab River and travel towards Twyfelfontein. Here we visit world famous rock engravings and spend time interpreting the fascinating history of these treasures. Local guides join us for a tour of these sites. Camping will be in the vicinity of Twyfelfontein.

Day 4: Brandberg

From Twyfelfontein we make our way south towards the Brandberg. At approx. 2800m this is Namibia's highest mountain. Camp is set up under huge ana trees at the foot of the mountain. We spend the afternoon exploring the lower reaches and valleys of the Brandberg.



Day 5: Spitzkoppe

Early morning wake-up to experience the magic of the "Burnt Mountain" at sunrise. After breakfast we head further into the Brandberg to visit the site of the famous White Lady painting. We once again make use of local guides and interpreters to learn more about the local peoples' lives in this fascinating and wild area. From here we make our way to Spitzkoppe, also known as Namibia's own "Matterhorn". This Granite Inselberg towers over the surrounding Namib gravel plains and is dotted with Bushman

paintings which we will explore on foot. Camping is under the stars at the foot of the Spitzkoppe.

Day 6: Swakopmund

After a final breakfast we head back to Swakopmund.

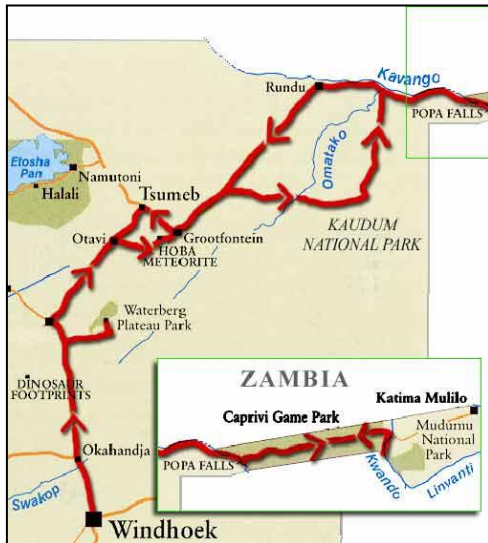


The cost of this itinerary is from £1981 per person, based on twin share and subject to availability at the time of booking. Please see price guide on page 14 for more information.

Classic Namibia North-East Camping Safari

Outline

Experience the rugged, densely wooded wilderness reserve of Kaudum Game Park, as well as the fertile wilderness, riverine forests, flood plains, swamps and open woodland that define the Kavango and Caprivi regions bordering Botswana, in this 11 day safari that takes in the best of north-east Namibia.



Day 1: Windhoek / Grootfontein

Depart from Windhoek via Okahandja, Otjiwarongo and Otavi to Grootfontein. Here we take the time to visit the Hoba meteorite, the largest of its kind on earth, before proceeding to Roy's Camp just north of Grootfontein. This evening you can relax and enjoy the sight of free roaming antelopes quenching their thirst at the nearby waterhole.



Day 2: Kaudom National Park

After breakfast, we travel east into the heart of the Bushmanland, Tsumkwe. After a short stop, the journey continues to the Kaudom National Park, the most remote and isolated National Park in Namibia. Camp will be set up at the Sikeretti camp site in the southern part of the park. This afternoon enjoy a game drive into the park in search of the many predators and large herds of elephant that populate this region.

In addition to the big game, Kaudom offers excellent birding, particularly around the various waterholes. Return to camp early evening.



Day 3: Kaudom National Park

Full day game viewing drive while travelling through the park with excellent game encounters en route. Good sable, roan, wildebeest, buffalo, kudu, giraffe, elephant and with a bit of luck predator and wild dog sightings can be expected. Camp will be erected at the Kaudom Camp site, which is ideally situated on a huge sand dune overlooking the Kaudom River valley. There's a good opportunity to encounter predators during the late afternoon game drive on the flood plains of the Kaudom River.

Day 4: Bagani / Kavango / Okavango River

Depart Kaudom National Park early morning and travel north to the Poba Falls area at Bagani. Following a very sandy and difficult path, the journey continues through dense forest areas with a visit at one of the traditional Kavango communal villages en route. We arrive at Ndhovu Lodge (or similar) in time for lunch. Here we set up camp on the banks of the Okavango River.

This evening enjoy the beautiful scenery and the peaceful grazing of herds of buffalo and elephant on the banks the Okavango River during an optional sundowner boat cruise on the river.

Day 5: Mahango National Park

Depart following breakfast on a full day game viewing drive into the nearby Mahango National Park. The game viewing in Mahango is excellent – red lechwe, waterbuck, sable roan, hippo, elephant, buffalo, possibly some predators, as well as the usual plains game can be expected. The birding is similarly excellent. Return to camp late afternoon in time to enjoy a relaxing sundowner drink. Overnight camping.



Day 6, 7 and 8: Bwabwata National Park

Bid farewell to the Kavango region with a transfer drive into the Bwabwata National Park, bordering the Kwando River. This game-rich region borders Botswana, and provides good opportunities to encounter elephant, hippo, buffalo, giraffe, roan and sable antelopes, all other plains and water game and exceptionally good birding.

Camp for the next three days will be erected at the Nambwa campsite (or similar) on the banks of the Kwando river in the Susuwe area. AM and PM game drives into the surrounding area as well as the Mudumo National Park will offer unique game viewing opportunities and experiences.

Day 9: Rundu

The return journey back into civilization takes us into the Kavango region, past neatly constructed communal villages to the town of Rundu. Spend the night in a comfortable, rustic lodge on the banks of the



Okavango River with a relaxing afternoon at the swimming pool or join a group for a sundowner boat cruise on the Okavango River (optional). Overnight in bungalows of Hakusembe Lodge (or similar).

Day 10: Waterberg Plateau National Park

After a short visit to the Craft Market in Rundu, head back into central Namibia past the towns of Tsumeb and Otavi into the Waterberg Plateau National Park. The rest of the afternoon is at your own leisure – relax at the pool or take a short hike to experience the unique fauna and flora of this part of Namibia. Overnight in bungalows of the Waterberg Plateau Park.

Day 11: Waterberg Plateau National Park / Windhoek

Optional early morning game viewing drive onto the massive plateau before heading back to the capital of Windhoek via the craft market of Okahandja. Arrive in Windhoek late afternoon.



The cost of this itinerary is from £1874 per person, based on twin share and subject to availability at the time of booking. Please see price guide on page 14 for more information.

Skeleton Coast, Desert Elephant, Black Rhino and Himba

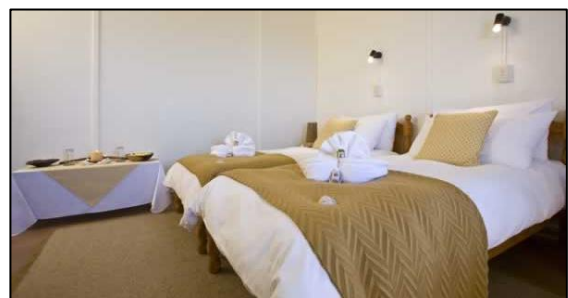
Outline

Explore Namibia's famous Skeleton coast in search of Desert Adapted Elephant and Black Rhino. This 7 day camping safari departs from Swakopmund and continues north along the Atlantic coast, before following the Hoarusib and Hoanib Rivers into the Damaraland highlands. The return trip to Swakopmund takes you to Fort Sesfontein and Twyfelfontein.



Days 1 and 2: Swakopmund / Skeleton Coast

Depart Swakopmund and travel north along the Atlantic coast. Visit the lichen fields near Wlotzka's Baken before continuing to Henties Bay, a small holiday resort, and then onwards to the seal colony at Cape Cross. After visiting the seals, the journey continues via Ugabmund northbound to Terrace Bay. These two days are spent exploring the spectacular Uniab River Delta and beach area of the Skeleton Coast up to Möwe Bay, with an option of some rock and surf angling at Terrace Bay. Accommodation is provided on a fully inclusive basis in the bungalows of Terrace Bay Resort.



Day 3: Palmwag Concession, Damaraland

This morning we leave the Skeleton Coast Park via Springbokwasser, experiencing the harsh transition from the Namib Desert to the Damaraland highlands with its impressive landscape and rugged valleys. We enter the 5000 square kilometres Palmwag Concession in the afternoon. Breathtaking landscapes in mountainous areas teeming with game welcome the guest – springbok, oryx, kudu, ostrich, jackal, zebra, giraffe, hyena, occasionally lion, leopard and cheetah provide excellent

opportunities for wildlife photography in this vast open wilderness area. With a bit of luck encounter the endangered black rhino (*Bicornis Bicornis*) and the famous desert elephant, which roam the area freely.



Day 4: Hoanib River

After breakfast enjoy a short hike with your guide as you look for evidence of night time game activity around the camp before we depart. The journey then continues into the upper Mudorib River, where we have a good chance of encountering black rhino or desert elephant. Arrive in the Hoanib River, a dry river bed densely overgrown with nutritious acacia trees providing the necessary fodder for the desert adapted elephant. There is a good chance of us encountering one of the breeding herds of these giant creatures during the evening's game viewing drive through the valleys and side arms of this unique natural paradise.



Day 5: Hoarusib River

Early departure in a northerly direction following the course of the Tsuxub River along the eastern Skeleton Coast boundary and into the Hoarusib River. There is a good chance that we will encounter plains game and desert elephant en-route. Set up camp in the Purros community camp site with sharing ablutions. In the late afternoon we visit a local Himba village, followed with a sundowner excursion in the beautiful Hoarusib River.



Day 6: Gomatum River / Sesfontein

Today marks the start of our return journey, as we travel in a easterly direction towards Grootberg Lodge while following the game filled valley of the Gomatum River. Time allowing, we will make a brief stop at the village of Sesfontein and its fort, a former German colonial outpost. Overnight in fixed accommodation at Grootberg Lodge.

Day 7: Twyfelfontein / Swakopmund

Early departure to Twyfelfontein, to admire the rock engravings. Thereafter we continue via the "Burnt Mountain" to Uis, a deserted mining town. As you pass the highest mountain of Namibia, the approx. 2,800m high Brandberg, it appears almost surreal. Return to Swakopmund in the late afternoon.



The cost of this itinerary is from £1318 per person, based on twin share and subject to availability at the time of booking. Please see price guide on page 14 for more information.

Epupa and Ovahimba Experience

Outline

Follow the mighty Kunene River, visit the fort town of Sesfontein, and explore the Epupa Falls in this 4-day Namibia camping safari. You will depart from Palmwag Lodge and make your way to the Epupa Falls via Sesfontein, visiting a number of Ovahimba Settlements en route. Enjoy overnight camping on the banks of the magical waterfalls and day time walks to explore the surroundings. Return to Palmwag Lodge on day four via Fort Sesfontein.

Day 1: Hoarusib River, Damaraland

Early morning departure from your lodge in the Damaraland area. We head in a northerly direction past a series Herero villages at Anabib en route to Kaoko Otavi, an old Dorsland trek settlement, to the southwest of Opuwo. Here you will have your first encounter with the nomadic Ovahimba tribespeople. After a brief stop in Kaoko Otavi, the safari continues in a westerly direction via smaller Ovahimba settlements and villages. Camp for the night is erected in the picturesque Hoarusib River valley, a dry riverbed coursing through this barren land. Overnight camping.



Day 2: Kunene River, Kaokoland

From here the trail follows the ancient river bed in a northerly direction into the centre of Kaokoland. The trail leads over beautiful mountain ranges and densely vegetated river beds on its way towards the Kunene River. Here we set up camp, in this untouched, barren piece of the beautiful north western Kaokoland.

Day 3: Epupa Falls

Today the safari reaches its prize destination, the Epupa Falls on the mighty Kunene River. You will have ample time to explore the Falls on an adventurous walk within the area followed by a welcoming swim in one of the upper rapids of the falls. Overnight camping on the banks of the Kunene River.

Day 4: Palmwag Concession

Pack up camp and head back towards the Palmwag area via the village of Okangwati, a major trading station of the Himba and Herero living in this area. We take a short lunch stop at Opuwo before continuing via Sesfontein to a lodge in the Palmwag area.

Picnic lunch en route with brief visit at the Ongongo waterfall. Late afternoon arrival at the Lodge in time to settle down for a relaxing sundowner.

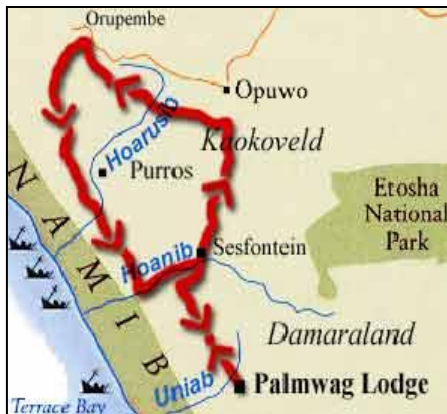


The cost of this itinerary is from £733 per person, based on twin share and subject to availability at the time of booking. Please see price guide on page 14 for more information.

Just Ovahimbas

Outline

This relatively short, 5 day safari starts at the Palmwag Reserve and continues over the Sesfontein Pass into the centre of the Kaokoland. Experience the nomadic way of life of the Ovahimba and enjoy three overnight stays in the Hoarusib River, before moving onto the Hoanib River, home to the desert adapted elephant, where you'll spend a night under starry skies. The return trip takes you to Fort Sesfontein.



Day 1: Palmwag Concession / Kaokoland

Depart Palmwag Reserve this morning and travel north to Opuwo, the centre of Kaokoland, via the Khowarib Gorge and Anabib. Continue into the western regions of the Kaokoland past the village of Kaoko Otavi. Wild camping on the banks of the Hoarusib River.



Day 2: Hoarusib River

After a short morning walk along the Hoarusib River, the journey continues along the deep gorges and valleys of Kaokoland. This morning you will have the chance to visit various Ovahimba villages and their families, allowing you to learn more about their traditional lifestyle and customs of this ancient ethnic group. The Ovahimba gratefully accept sugar, confectionery, tobacco and

other trinkets as gifts. Overnight open camping in the region of Orupembe, a large Ovahimba settlement.

Day 3: Hoarusib River Valley, Kaokoland

Today's drive continues in a southerly direction into the Khumib River Valley. The vegetation becomes increasingly sparse as we venture into the valley – large grass plains and savannah game adorns this region. Later today the trail leads across a scenic mountain pass into the flowing Hoarusib River Valley. A vegetation rich grazing area that is home to a number of Ovahimba settlements. We camp at Purros communal camp site, where we have a good chance of seeing the desert elephant, which often come to feed on the nutritious acacia pods in close proximity to the camp.



Day 4: Hoanib River

The safari trail leads through the scenic lower Hoarusib River Valley with possible good plains game and desert elephant encounters en route. With a bit of luck, encounter the Kunene lions that have adapted to this harsh region of the desert. The route continues along the eastern Skeleton Coast Park into the Hoanib River. The densely overgrown river bed is a major breeding ground for the desert elephant, owing to the numerous nutritious acacia trees that grow here. We have a good chance of encountering one such breeding herd during as we game drive through the valleys and side arms of this unique region. Overnight camping in one of the side valleys of the river.

Day 5: Sesfontein / Palmwag Concession

After a short guided walk in the morning, our return journey follows the course of the river valley towards the village of Sesfontein. Expect numerous game encounters, including with roaming elephant herds feeding their way towards the next open water source, to mark this special day of the tour. Arriving at Sesfontein, you'll have the chance to visit one of the 6 springs at the mountain slopes of the village (hence the name "Sesfontein - meaning six springs") and a one-time German fort which has been restored and today functions as a lodge. The old military cemetery with its lonely graves conjures up memories of the German Colonial period.

Alleviate the midday heat in a natural "pool" of the Ongongo Waterfall near Warmquelle, where the crystal clear water of the pool is inviting and refreshing – indeed, an ideal venue for lunch!

The return trip leads through the Khowarib Gorge – a fairytale gorge through which the Hoanib River has laboriously wound its way. After a short rest, we return to the Palmwag area.



The cost of this itinerary is from £1043 per person, based on twin share and subject to availability at the time of booking. Please see price guide on page 14 for more information.

Kaokoland and Kunene River

Outline

Depart from the Palmwag Reserve into the central Kaokoland, before traversing the notorious van Zyl's Pass into the Marien River Valley. During this 7 day itinerary you will be given the opportunity to meet the Ovahimba and become acquainted with their ancient customs and traditional way of life, and to explore the dramatic Hartmann Valley, part of the larger Kaokoland. The return trip takes you along the eastern border of the Skeleton Coast via the Hoarusib and the Hoanib River to Palmwag Lodge.



Day 1: Palmwag Concession / Hoarusib River

Early departure from Palmwag Reserve to Sesfontein and Opuwo via the Sesfontein Pass. The trail continues in a westerly direction and stops for a short visit at Kaoko Otavi. Overnight camping on the banks of the Hoarusib River.

Day 2: Hoarusib River

Today you will have the opportunity to explore an Ovahimba village as well as a traditional hut, where you will learn more about the old customs and traditional way of life of this nomadic tribe. Overnight camping in the region of Orupembe, a large Ovahimba settlement.



Day 3: Hartmann Valley, Kaokoland

We continue into the western part of Kaokoland, the Marienfluss and Hartmann Valley. Our destination today is the Kunene river area. Here we set up camp, under lovely shady anatees (Faidherbia albida) on the banks of this mighty river.



The cost of this itinerary is from £1135 per person, based on twin share and subject to availability at the time of booking. Please see price guide on page 14 for more information.

Day 4: Hartmann Valley

Today's activities include a guided 4x4 sightseeing tour, a hike in the gorges and valleys of the Hartmann Valley, and a visit to an Ovahimba family in the vicinity of the camp. The Hartmann Valley is a unique and beautiful region where you will be able to enjoy, in perfect solitude, nature at its purest.

Day 5: Purros

Today we embark on our return journey to Palmwag area. Via Orange Drum the journey takes us through the western Kaokoland to Orupembe. We traverse almost deserted contrasting landscapes, ranging from desert to the Kaoko Highland. We camp overnight on the communal camp site at Purros.



Day 6: Hoanib River

After breakfast the journey continues in a southerly direction through the beautiful Hoarusib River Valley towards the Hoanib River. With a bit of luck the desert elephant can be sighted. This evening we camp in one of the many branches of the Hoanib River. Small herds of elephant often stroll past the camp unhindered.

Day 7: Sesfontein / Palmwag Concession

We break up camp after breakfast and game drive in search for elephants. After a short sojourn at Sesfontein, a one-time Schutztruppen outpost which today functions as a lodge, the journey takes us back to the Damaraland area.

Price Guide	Discover Kaokoland	Damaraland Wilderness Experience	Rivers and Mountains of Damaraland	Classic Namibia North-East Camping Safari	Skeleton Coast, Desert Elephant, Black Rhino and Himba	Epupa and Ovahimba Experience	Just Ovahimbas	Kaokoland and Kunene River
January – June 2014	£1918 per person. £70 Single Supp.	No set departures. Please contact us for a quote.	No set departures. Please contact us for a quote.	£1936 per person £38 Single Supp.	£1318 per person	£733 per person	No set departures. Please contact us for a quote.	£1135 per person
July – December 2014	£1963 per person. £70 Single Supp.	£1904 per person	£1981 per person	£1936 per person £38 Single Supp.	£1430 per person	£751 per person	£1043 per person	£1357 per person

Cost Includes: <ul style="list-style-type: none"> • Travelling costs as per itinerary; game drives, activities, entrance- and park fees; • Accommodation in two-man tents / double rooms; • Full board, refreshment drinks en-route, house wine and beer at dinner whilst camping; • Experienced guiding in English or German; • VAT and Bed levy. 	Cost Excludes: <ul style="list-style-type: none"> • International transfers. • Domestic flights and transfers unless specified in itinerary. • Expenses of a personal nature, i.e. laundry, telephone, gratuities, souvenirs • Personal-, medical- and evacuation insurances; • Additional activities • Alcoholic beverages and drinks
Additional Information <ul style="list-style-type: none"> • Rates are as per scheduled departures above; • It is compulsory for all guests to have comprehensive cancellation-, default-, baggage-, emergency evacuation- and medical insurance for the duration of the trip; • The operator reserves the right to change the itinerary. 	

Your Financial Protection

All monies paid by you for the air holiday package shown [or flights if appropriate] are ATOL protected by the Civil Aviation Authority. Our ATOL number is ATOL 3145. For more information see our booking terms and conditions.