

The Best of Kenya

If you don't have much time available but want to see as much of Kenya as possible, this small group itinerary is perfect. Visiting the parks of Samburu, Lake Nakuru and the incredible Maasai Mara you will see lots of wildlife including some endemic species such as Gerunuk and Rothschild Giraffe. You will also stay in great lodges and travel with knowledgeable guides, this itinerary is a fantastic introduction to East Africa and will leave you wanting more!

Day by day Itinerary

Day 1 – Depart UK

Depart London Heathrow for Nairobi in the early evening on Kenyan Airlines.

Day 2 – Arrive Nairobi

Arrival into Nairobi is early in the early morning; you will be met and transferred to the Nairobi Safari Club for one night (B). The remainder of the day is free; you may like to book a tour to see some of the sights of Nairobi which include Daphne Sheldrick's elephant orphanage, Giraffe Manor and Karen Blixen's house. The Nairobi museum is also well worth a look.

Nairobi Safari Club

The Nairobi Safari Club is an all suite hotel; the suites are very spacious with a lounge and bedroom. The rooms are equipped with satellite TV, air conditioning, digital safes and a mini bar. The Brasserie Restaurant offers food from all over the world or 24 hour room service is available if you prefer to dine in your suite. The Safari Terrace offers drinks and snacks. The hotel has a heated swimming pool, sauna, steam bath, and massage parlour.

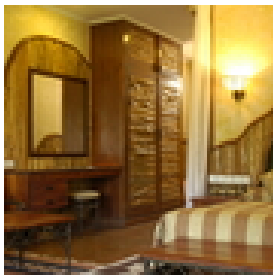


Day 3 - Samburu Game Reserve

You will depart Nairobi after an early breakfast for Samburu, heading north; you'll pass near Thika and continue through some breathtaking scenery dotted with rushing mountain streams and fields of tea and coffee. After Nanyuki town, you'll continue north, eventually reaching a dusty outpost known as Isiolo, the last major stop on the journey into the remote northern frontier district. From here it's a fairly short hop to Samburu. You will arrive at the lodge in time for lunch and then depart for an afternoon game drive returning to the lodge as the sun sets. Two nights at Samburu Lodge on a full board basis.

Samburu Lodge

Samburu Lodge is set in a rugged landscape with a backdrop of jagged mountains. This area has its own indigenous animals, which are unique to the region. The landscape, wildlife and vegetation are very different to the lush, rolling grasslands of other national parks. Here you will find thorn-bush, open plains and vast horizons of this desert terrain. The lodge is situated on the banks of the Uaso Nyiro River and offers a wide choice of accommodation spread along the river bank. The dining room is open on the river side and the popular Crocodile Bar overhangs the water and has a great vantage point for nightly



crocodile feeds. The birdlife is especially notable around the lodge. During the heat of the day you may prefer to lounge around the pool and in the evening traditional dances of the Samburu warriors are performed.

Day 4 - Samburu Game Reserve

During your stay you will enjoy early morning game drives followed by breakfast. There will be time to relax by the lodge pool or the terrace overlooking the river before another game drive in the afternoon returning to the lodge as the sun sets.

Samburu, Buffalo Springs and Shaba

These three adjoining reserves are situated north of Mt. Kenya and total around 535 sq km. Watered by the muddy Ewaso Ngiro River and natural springs, this is classified as a lowland area, so generally hot, arid and dusty. It is also extremely scenic, with ravine areas dominated by acacia and doum palms. Also of interest are the volcanic rock cones and craggy hills, which spread through certain areas of the park. Large numbers of gerenuk make this area exciting but plenty of other species are also common. These include crocodile, hippo, gazelle, Beisa oryx, Grevy's zebra, Somali ostrich, reticulated giraffe, elephant, vervet monkey, cheetah, leopard and lion that still roam its acacia woodlands, ravines and grasslands. There are also some amazing birds to spot in the riverine forests.



Day 5 - Aberdares

Depart after breakfast and drive south into the forests of the Aberdare Mountain range arriving at Outspan for lunch and then afternoon transfer to Treetops. This is a tree lodge set in a forest glade with a waterhole that attracts all sorts of wildlife during the day and night. The waterhole is floodlit and there is an underground viewing platform.

Overnight at Treetops on a full board basis. (bathroom facilities on shared basis)

Treetops - the Aberdares

Treetops is Kenya's original tree lodge, legendary for its historical royal connection, for the animals it attracts and for the sheer joy of exploring a tree house visited by rhino, elephant, buffalo, lion, bushbuck, waterbuck and many other species. Guests generally depart the Outspan after lunch for the ten-mile drive to Treetops. Here, guests are met by a ranger who advises guests on common sense rules of behaviour necessary for safety and good animal viewing. The lodge rises dramatically out of the ground on stilts and overlooks a water hole and salt lick. It has four decks and a rooftop-viewing platform. Solely dedicated to game



viewing, the accommodation is compact and cosy. At 6,450 feet above sea level it is chilly at night at all times of the year, especially from June to September. During these months, you will need sweaters and hats for comfort and warmth. The bedrooms are small, neat and cosy, like cabins on board a ship. Dinner is served at refectory tables with bench seating which is intimate, relaxed and very friendly.

Day 6 - Lake Nakuru

An early morning start will take you north-west as you head for Nyahururu, still known to many as Thomson's Falls for its 237-foot cascade. Now travel in a southerly direction to your next destination, the spectacular Lake Nakuru. This is often coloured a shimmering flamingo pink from

thousands of the beautiful birds lining its shores. You will arrive at your lodge in time for lunch. Following lunch there is an afternoon game drive returning to the lodge as the sun sets. Overnight at Lake Nakuru Lodge on a full board basis.



Lake Nakuru Lodge

Lake Nakuru Lodge is situated in the heart of one of Kenya's most densely populated wetland National Parks, only two hours' drive from Nairobi, through beautiful forested uplands and passing a series of lakes. The park lies on the outskirts of the bustling market town of Nakuru. Both black and white rhino are being given a new lease of life in this 188 sq km, fully-fenced park - and they are carefully protected. The present rhino population is over 50 and



they continue to multiply. The Rothschild giraffe is another rarity and the park has its fair share of buffalo, leopard, zebra, eland, waterbuck and lion. Lake Nakuru Lodge is in the south-east area of the park, with commanding views of the lake and the flamingos for which it is justly famous. Lush gardens surround the lodge and cottages. There is a good programme of activities and evening entertainment.

Day 7 - Maasai Mara Game Reserve

After an early morning breakfast you will depart and drive to Narok town via Mai-Mahiu with a brief a rest stop and proceed to Mara arriving in time for lunch at the lodge. After lunch you will depart for an afternoon game drive returning to the lodge as the sun sets. Two nights at Keekorok Lodge on a full board basis.

Keekorok Lodge - the Maasai Mara

Keekorok Lodge was opened in 1965 and lies at the southern end of Maasai Mara National Reserve, approximately 280 kilometres from Nairobi. It is located in the direct path of the annual migration and was the first lodge to be built in the Mara. At the height of the migration, Keekorok is surrounded by a swarming mass of animals and there is hardly need to go on a game drive! Keekorok's charm lies in the liberal use of local building materials. Sand stone, cedar wood and other indigenous materials are used in all rooms and public areas. In front of the lodge there is a 300m elevated walkway that meanders through a small riverine forest to a small bar at the end. This overlooks a dam where resident hippo and other game are regularly seen. There are no fences around Keekorok and it is not uncommon to see elephant and buffalo on the perimeter of the grounds or even strolling in, though there are watchmen on the constant look out!



Day 8 - Maasai Mara Game Reserve

Enjoy early morning and afternoon game drives during your stay.

Maasai Mara

One of world's most famous reserves, the 1,600 sq km 'Mara' consists of undulating hills and great rolling grasslands that sustain some of the most varied wildlife in Africa, if not the world. There is always game in the 'Mara', however, it changes its character dramatically with the seasons. When the grass is fairly high in many areas, game-viewing is restricted, but the

countryside is incredibly green and at its most scenic. As the countryside dries out, game-viewing improves. Game concentrations are at their greatest from around July to the end of October, when the migrating herds filter across the Mara River from western Serengeti. During this period, you will find vast plains, filled as far as the eye can see, with wildebeest, zebra, gazelle, eland, topi and hartebeest as well as the normal resident herds such as elephant, buffalo and giraffe. Naturally, these are all followed by great prides of lion, hyena, cheetah and the various other predators and scavengers. Many animals do not survive these annual trips due to exhaustion or the treacherous river crossings, where some of the world's largest crocodiles await their feast. Other highlights of the 'Mara' include the early morning balloon safaris.



Day 9 - Homeward

After breakfast you will depart the Maasai Mara and head across acres of rolling wheat and barley farms to Narok, the district headquarters of this region of Maasailand. From here cross the vast plains on the floor of the Rift Valley whilst keeping an eye out for herds of giraffe and gazelle before heading up the rift escarpment. You'll arrive into Kenya's bustling capital in the early afternoon. Once in the city, you can be dropped off at a city centre hotel if you are continuing your trip or at the airport for your return or onward flight.

The flight to London departs late in the evening, arriving early the following morning.

The cost of this itinerary is £ per person, based on twin share and is subject to availability at the time of booking.

The cost of this itinerary is from £1895 per person based on twin share.

Includes:

International flights with Kenya Airlines in economy class inc. taxes

Meet and greet services

All transport and game drives on road safaris will be in a modern safari cruiser (with seven window seats) with an English speaking driver-guide

Meals and accommodation as specified

All park fees and government taxes

½ litre bottle mineral water per person per day on game drives

Excludes:

Visas

Gratuities, Drinks, portorage

Personal travel insurance – please ask for a quote

Items of a personal nature



Gane and Marshall
Aldenham, 2 Deer Park Lane, Tavistock, Devon. PL19 9HD
Tel: +44 (0)1822-600-600
e-mail: holidays@ganeandmarshall.com website: www.ganeandmarshall.com

