

Secrets of South Luangwa

The South Luangwa Valley used to be a well kept secret, but those who choose to venture into this untouched and wildlife rich area will not be disappointed. With an abundance of leopard and incredible birdlife also known as the home of walking safaris and excellent guiding expertise, this valley offers a superb wildlife experience.

Itinerary

Day 1 – London Heathrow to South Luangwa

The British Airways evening flight from London Heathrow to Lusaka is direct and convenient (departs Wed, Fri, and Sun).

Day 2 - Mfuwe to South Luangwa

The BA flight arrives early in the morning which connects well with the domestic flight to Mfuwe. On arrival at Mufwe you will be met and transferred to Nsolo Camp where you will stay for the following two nights (FB).

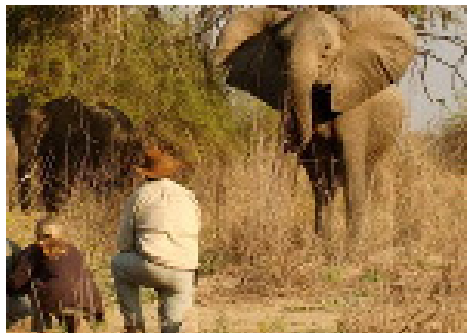
Nsolo Bush Camp

Nsolo Bush Camp is situated on a bend in the Luwi sand river that runs through the heart of Zambia's South Luangwa National Park. Accommodation in this luxury safari camp consists of four individually designed chalets each on raised wooden decks with high thatched roofs and private verandahs. The rooms are very spacious with the stylish furnishings that one would expect from one of Zambia's luxury walking safari camps. As with most of Norman Carr's bush camps the bathrooms have no roofs and are set under the shade of the trees above.



Day 3

At Nsolo you don't usually have to search hard for your African safari experience. The wildlife frequents a waterhole in the dry river-bed in front of the camp and often your most exciting game viewing is from the comfort of your own deck or from the central chitenje that houses the bar and small camp library.



Nsolo is one of the more historic camps in Zambia; it was sited by Norman Carr in 1987 and Shaddy, the Camp Manager and guide. Shaddy has been studying the wildlife and conducting walking safaris from this camp for over 10 years.

This is one of the South Luangwa's more remote, luxury walking safari camps and there is only a limited network of roads in this area. As a result most of the game viewing activities are centered on walking safaris although short night drives are also offered.

The Luwi river system is renowned for its lion population. Various pride territories overlap in this area and the cats use the dry river bed as a thoroughfare and a means not only of locating their prey, which come to drink, but also of locating their rivals who must be warned away.



There are few African experiences more exciting than heading out on a walking safari early in the morning, having heard lions calling through the night, finding fresh tracks and following them! With voices hushed and hearts beating your mind is suggesting there is a lion behind every bush. This is a true African safari experience. This is big game viewing on foot and at its best.

Day 4

This morning you will transfer to Luwi Bush camp. You can choose to transfer by vehicle or by walking with a guide; your luggage is taken separately. A two night stay at Luwi Bush camp (FB).

Luwi Bush camp

Luwi is a traditional seasonal bush camp nestled under huge mahogany trees on the banks of a permanent lagoon. Situated deep in the heart of the National Park it is one of the only Luangwa safari camps to be positioned well away from the permanent waters and rich vegetation of the



main river. Accommodation is in four huts that are made of grass and thatch with polished mud floors. Each room is designed differently utilising trees and natural vegetation wherever possible. The design of these rooms lends the camp a rustic appeal and provides a truly African bush experience.

A small thatch provides shade over the bar area but other than this there is no central covered area. Daytime meals are served in the shade of the trees above whilst dinner is taken under the stars accompanied by the many sounds of the Zambian

night.

There is a large lagoon adjacent to camp that teems with hippo and crocodile. This permanent water source attracts wildlife from far and wide making the camp area constantly busy with animals.

Day 5

Due to its remote location there are not many roads in the area so activities are centred on walking safaris. This makes Luwi Bush Camp one of the most enthralling camps in Zambia. The wildlife in the area is prolific and to track it each day on foot is a memory that will last a lifetime.



Typically your day will start early, around the camp fire when you will discuss the noises and animals heard through the night.

Your morning walking safari is likely to take three to four hours returning you to camp in time for a hearty brunch. You can relax in the afternoon, viewing the wildlife attracted by the lagoon, before a further safari later in the day.

Luwi was one of the South Luangwa National Park's first remote safari camps. Norman Carr sited the camp back in the 1980s and today this camp, more than any other in Zambia, offers guests a true walking safari and a taste of the traditional African bush experience.

Day 6

Transfer to Mchenja Bush Camp where you will stay for the following two nights (FB).

Mchenja

Mchenja, which means "ebony", occupies a stunning setting beneath a magnificent grove of these trees on the banks of the Luangwa River and is in an area teeming with wildlife. This bush camp takes luxury in the bush to a level not previously seen in Zambia!

The camp comprises four stylishly designed tents each under its own thatched roof and with a deck in front overlooking the Luangwa River. The tents have inside baths with an outside shower room. There is a small pool alongside the bar within the thatched main chitenje, allowing guests to seek cool refuge after their morning's safari activities.



Day 7



Guests staying at Mchenja can choose whether they want to view their wildlife on foot or from an open gameviewing vehicle. The gameviewing in this area is superb and night drives are usually very worthwhile. In addition to the ebony grove at camp there are two other stunning groves close by meaning that these magnificent trees play a large part in your safari experience whilst at Mchenja.

Day 8

Mid afternoon transfer to Mfuwe Airport for the flight to Lusaka, on arrival you will be met and transferred to Pioneer Camp for an overnight stay.

Pioneer Camp

Pioneer camp is conveniently located just 20 miles from Lusaka airport. There are 11 individual thatched chalets and a two bedroomed cottage; all are set within 25 acres of miombo woodland. You can walk around the property, which is surprisingly good for birds.

At the centre of the Pioneer Camp is the open thatched bar/restaurant or 'Chitenge', this is for residents' only and is open from 7am to 11pm. Coffee and tea are always available along with drinks from the bar. Breakfast, lunch and dinner are served here. Your stay includes return airport transfers and dinner.



Day 9

An early departure for Lusaka airport where you will check in for your return flight to London Heathrow, The flight arrives in the early evening.

A stay at Victoria Falls can be added to this itinerary, ask for a quote.

The cost of the itinerary outlined above is from £3215 per person, based on twin share.

The price includes:

1. British Airways return flights from London Heathrow
2. Return domestic flights from Lusaka to Mufwe
3. Accommodation as described
4. All meals and activities while in camp
5. All transfers
6. Park fees
7. Airline Taxes

The price Excludes:

1. Visas
2. Insurance
3. Entry and departure government taxes
4. All drinks in Zambia
5. Items of a personal nature (curios, spirit liquors, telephone calls etc.)
6. Gratuities
7. Laundry
8. Optional extra activities
9. All other travel arrangements before or after the safari

