

**NORTH TANZANIA**  
**LIGHT MOBILE CAMPING AND LODGE SAFARI**



## Tanzania Safari itinerary

### Flights

Flight	Date	From	To	Depart	Arrive	Airline
		Flights to be confirmed				

### Day 1 UK – Kilimanjaro 1nt Ilboru standard room HB



Depart UK on KLM day flight to Kilimanjaro via Amsterdam. *(or select Kenya Airways night flight and arrive next morning)*

On arrival in Kilimanjaro our driver will meet you for your transfer to Ilboru Lodge Arusha on the outskirts of Arusha. The lodge has a charming atmosphere and is a great place to relax after a long flight. Ilboru has a total of 30 rooms well positioned in the lush tropical gardens. There is also a lovely swimming pool.

### Day 2 Tarangire Light Mobile tented accommodation FBG



This morning your driver/guide will pick you up to start your private safari. Drive to Tarangire National Park. Tarangire is one of the lesser known of the Tanzanian Parks, giving it a real air of undiscovered Africa.

Most famous for its large herds of elephant, tree climbing pythons and massive baobabs.

Although a small park, Tarangire is home to a dense wildlife population, second

only to Ngorongoro. Birding is particularly good here; the swamps, tinged green year round, are the focus for 550 bird varieties, the most breeding species in one habitat anywhere in the world.

Today will be your first night under canvas in Tanzania. You sleep in large Dome or A Frame tents with mattress on light weight camp beds. Beds are made up with sheets and blankets.

A simple solar shower and long drop toilet with toilet tent are provided for times, when the official camp sites do not have these facilities, or for times that you stay in Special Camps Sites. NB Solar showers only are effective if the shower bag can be hung in sunlight for a few hours.

Water is provided within the Mobile Safari costs. Before setting off from Arusha you will be able to pre-buy your soft and alcoholic drinks from the local shop. Or we can pre-order for you.

Camping equipment is carried in the main safari vehicle and for your programme a good open camp sites are costed but you can also opt for private camps known as Special Camp Sites.

This is a participatory safari so you will be able to help put up the tents on arrival, take them down on departure. Your driver/guide and assistant will prepare meals.



<b>Day 3</b>	<b>Tarangire - Ngorongoro Crater Highlands</b> <b>Light mobile tented accommodation</b>	<b>FBG</b>
--------------	--	------------

After an early breakfast you will have time for a game drive in Tarangire National Park before continuing on to the Ngorongoro region and the Masai lands around Ol Deani in the Crater Highlands. There is some really good walking there and the views are wonderful. Picnic lunch in the Crater highlands. Guided walk to the rim of Ol Deani and then look down into the remote crater floor, which is now lined with trees and shrubs. Drive to your Highland camp for dinner and overnight.



<b>Day 4</b>	<b>Ngorongoro Crater</b> <b>Ngorongoro Serena Lodge, standard rooms</b>	<b>FBG</b>
--------------	--	------------

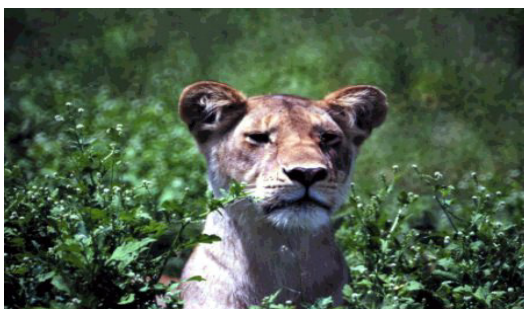
After an early breakfast, drive to Ngorongoro Crater - the best self-contained safari destination in the world. The world's largest unbroken caldera, it is often referred to as the 'Garden of Eden'. The rich pasture and permanent water of the crater floor shelters a large population of animals.

In fact, the crater floor is one of the most densely crowded game areas in the world and is home to about 30,000 animals. The open grassland makes it easy to police, so it is also a stronghold for endangered species like black rhino and cheetah.



Accommodation in Ngorongoro Serena Lodge perched right on the rim of the crater with splendid views of the crater floor. The lodge blends into its surroundings camouflaged in river-stone and cloaked in indigenous creepers and linked by timber walkways that skirt the buttressed roots of ancient, liana-hung trees. There are 75 comfortable, centrally heated ensuite rooms each with private terrace. Meals are buffet style and there is an open fire to sit around with drinks before and after dinner.

<b>Day 5</b>	<b>Serengeti National Park light mobile tented camp</b>	<b>FBG</b>
--------------	---	------------



After breakfast depart the vast plains of the Serengeti eco-system. Serengeti comes from the Maasai word 'Siringit' meaning 'the place where the land runs on forever' and refers to the flat grassy plains which make up about a third of the park. It is these grasslands and savannahs that ensure that the area is jam-packed full of game. Game here includes wildebeest, zebra, impala, warthogs, topi, gazelles and hyena. Lion, leopard, cheetah and caracal.

<b>Day 6</b>	<b>Serengeti National Park light mobile tented camp</b>	<b>FBG</b>
--------------	---	------------

Full day of game drives in the Serengeti. Overnight in Light Mobile camp.



<b>Day 7</b>	<b>Lake Manyara</b>	<b>1nt Mikunga Tented Camp</b>	<b>FBG</b>
--------------	---------------------	--------------------------------	------------

Drive to Lake Manyara National Park which stretches along the base of the 600-metre high Rift Valley escarpment. Its ground water forests, bush plains, baobab strewn cliffs, and hot springs offer incredible ecological variety in a small area, rich in wildlife and incredible numbers of birds. Lake Manyara is home to a huge array of bird life. Pink flamingo by the thousands, colourful specks against the grey of the lake shore and yellow-billed storks, herons, geese, grebes, ibises and kingfishers are also very common.

Lake Manyara's famous tree-climbing lions are another rarity. The only kind of their species in the world, they make the mahogany and acacia trees their home during the rainy season. In addition to the lions, the national park is also home to the largest concentration of baboons anywhere in the world, a fact that makes for interesting game viewing of large families of the primates.

Accommodation at Mikunga Camp which is set on 35 acres of acacia forest in a secluded part of Mikunga Village. Bushbuck and other antelope are sometimes seen on the property. Dwarf galago are common and can be seen most evenings at dusk.



The camp consists of nineteen self-contained tents. Bathrooms have running hot and cold water, showers, and flush toilets. There is a dining room and bar under thatch. Electricity is 12 volt supplied by solar power. The tents are all spacious, under thatched roofs on platforms with verandahs. Towels, soap and bottled water are provided in the bathrooms. The rooms have mosquito nets, coils and sprays.

Mountain bikes can be hired and a trail starts directly from the camp. There are lots of cultural and village tours you can experience locally too.

## **Day 8 Manyara game drive and return to airport or extend programme**



After a game drive in Manyara National Park, there are several options. Here are some ideas:

1) you could opt to continue with a Light Mobile Safari of 2 or 3 nights into the Maasai lands of the Rift Valley floor, following a 4WD trail under the lee of the great Escarpment and heading towards the pair of majestic volcanoes Kerimasi and Ol Doinyo Lengai and Lake Natron.

2) You could drive to Arusha Airport (approx one hour's drive) and pick up a flight to

Zanzibar or the mainland coast, where we offer a vast range of hotel accommodations.

3) You could head back to Kilimanjaro Airport and the evening flight home.

*Please contact our office and we shall help you plan the next stage of your holiday to East Africa.*

