

Dudhwa National Park



Just south of the Nepal-India border, Dudhwa National Park encompasses some 49,000 hectares of dense natural forest in the remote northern Terai of Uttar Pradesh state. Bordered by the Suheli River to the south and the Mohana River to the north, it is one of India's most remote and spectacular wilderness parks, a self-contained wildlife sanctuary that is home to such rarities as tiger, wild elephant, one-horned rhino, and barasingha (swamp deer) – all heavily endangered species which have eked out a home in the isolated wilderness of Dudhwa.

Day 1: Arrive Delhi

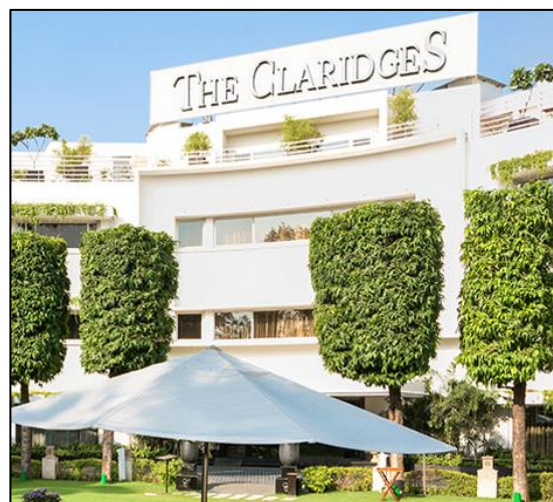
You will be met on arrival in Delhi by our local representative and transferred by private vehicle to the Claridges Hotel for 1 night in a deluxe room (incl. breakfast).

The Claridges, New Delhi

Dating back to 1952, the Claridges is an upmarket 5-star hotel offering luxurious accommodation in Lutyens' Delhi – New Delhi's diplomatic district – placing it within easy reach of Connaught Place, the Delhi National Museum and Lodhi Gardens.

The Claridges is a low-rise complex of three main buildings sheltering a pool and courtyard. It sits on a three-acre site, amid carefully-tended gardens and manicured lawns.

The Claridges Hotel blends old-world charm with contemporary facilities and furnishings. Its 137 rooms and suites are decked out in colonial deco style, with wood panel flooring, dark wood furnishings and white & cream upholstery. Each room is equipped with a plasma TV, minibar and en-suite bathroom with bath/shower.



Your Financial Protection

All monies paid by you for the air holiday package shown [or flights if appropriate] are ATOL protected by the Civil Aviation Authority. Our ATOL number is ATOL 3145.

For more information see our booking terms and conditions.

The Claridges also houses a large swimming pool, a high-end shopping arcade, and a fabulous selection of fine-dining restaurants, ranging from the Sevilla, specialising in Mediterranean cuisine, to Dhaba, which celebrates North Indian food culture.

Evening at leisure.

Day 2: Delhi to Lucknow

You will be collected from your hotel in Delhi before the crack of dawn and transferred to Delhi Railway Station to catch the early morning train to Lucknow (first class carriage). The train departs at 6am and arrives in Lucknow just before 1pm. If preferred, you can also fly.

On arrival in Lucknow, you will be met and transferred by private vehicle to the Taj Lucknow for two nights in a superior room (incl. breakfast).

Taj Lucknow (Gomti Nager)

Situated in the heart of Lucknow, on the banks of the Gomti River and just 8km from the old railway station, the Taj Lucknow offers easy access to the city's many restaurants and entertainment areas.

The rooms are large, spacious, and beautifully-furnished. All enjoy a garden or pool view. Amenities include high-speed Wi-Fi, safe, mini bar, tea/coffee maker and telephone.

Taj Lucknow has an excellent restaurant in the lobby and is within walking distance of a number of good Lucknow restaurants. There are 25 acres of gardens to explore.

Day 3: Lucknow

After breakfast set off with your guide on a full-day city highlights tour of Lucknow, taking in the Dilkusha Palace, the Clock Tower, Chota Imambara (the Palace of Light), and the famous tombs of Saadat Ali Khan and Begum Murshidjahi.



Lucknow is a beautiful city that has managed to retain much of its old world charm and grace during what is a time of rapid modernisation across India.

Few Indian cities offer as many historical attractions and architectural gems as Lucknow. A British outpost during the 19th-century, the city is home to a number of colonial-era buildings, some better preserved than others (the British Residency, a famous landmark, is all but in ruins).

Perhaps more interesting, however, are the city's older structures, such as the 18th-century Bara Imambara, former home of the 4th Nawab of Awadh, and Rumi Darwaza, an intricately carved gateway constructed by Italian architects in 1784. Also of note is Lucknow's grand Victorian-style, Clock Tower, the largest of its kind in India.

You'll have the opportunity to explore these and other sights of interest during your guided tour.

Day 4: Lucknow to Dudhwa

After breakfast, depart Lucknow for Dudhwa – a long but scenic drive of 5-6 hours through fabulous countryside.



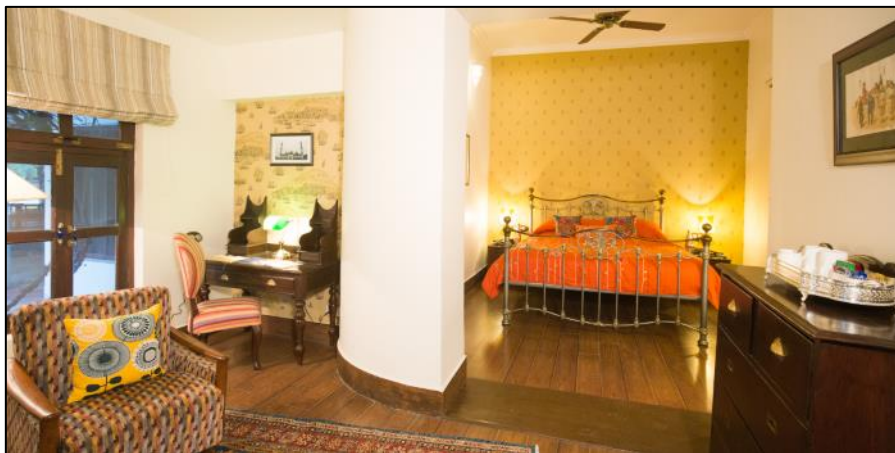
On arrival in Dudhwa National Park, check-in at Jaagir Lodge for 5 nights in a luxury room (incl. all meals, tea/coffee and soft drinks).

Jaagir Lodge

Jaagir Lodge was originally built in the 1940s by the British Governors of Uttar Pradesh as a hunting lodge. Today, however, it has an altogether more benign purpose, which is to help ensure the preservation of Dudhwa National Park and its unique wildlife, particularly its tigers and rhinoceros. There are just seven rooms at Jaagir Lodge, all of them individually decorated, and six villas. The luxury rooms are spacious with en-suite bathrooms and separate living and sleeping areas. They open at the front onto private verandahs—the perfect place for a spot of morning tea!

All meals are included during your stay at Jaagir. Five meals a day are served either indoors in the dining room or outside under the shade of the pavilion.

Jaagir has been converted in such a way so as to preserve much of its original character. It retains its old library/lounge with fireplace, and there's a cosy bar that is well-stocked with whiskeys, wines and cognacs. An extended verandah runs along the front of the building overlooking the manicured lawns. Separate to the main lodge, the Mango Grove is the ideal setting for an evening sundowner, while the fresh water swimming pool is the perfect spot to cool off during the heat of the day, with a wonderful view of the forest.



Late this afternoon you will set out for a gentle walk around the lodge and in the evening the lodge naturalist will brief you about the terrain of Dudhwa Tiger Reserve, highlighting the activities that

will take place during your stay at the lodge. Supper follows, then a good night's rest in time for an early start tomorrow!

Day 5: Dudhwa National Park and Kishanpur Wildlife Sanctuary

Wake early this morning and embark on your first game drive into the forests and grasslands of Dudhwa.

Almost 50,000 hectares in size, Dudhwa National Park is one of India's largest and most pristine forest environments. Wild and untamed, its unique terai ecosystem sets it apart from other Indian wildlife parks—the landscape is much more similar to that of neighbouring Nepal—and supports a remarkable number of endangered species, including tiger, rhino, swamp deer and Indian elephant. The flora is equally impressive.



For wildlife enthusiasts, a visit to Dudhwa is a must. Sightings of the regal one-horned rhino, while not guaranteed, are expected, and then there's the possibility of seeing herds of wild elephant, the five main types of deer, crocodile, wild boar, sloth bear, not to mention over 400 bird species (twitchers take note!), including rarities such as the Bengal Florican. Dudhwa is among the most exceptional of India's wildlife parks.

The morning will be spent exploring Dudhwa by 4x4 in the company of an experience naturalist guide. In the afternoon, continue to the Kishanpur Wildlife Sanctuary (approx. 1 hour). This sanctuary is dominated by sal, ficus and crocodile-bark trees, along with an array of flowers and trees like the silk cotton tree and the flame of the forest. This is a swamp area, fed by the Sharda River. Tiger are known to prowl here, while the endangered swamp deer is a common sighting, along with barking deer, wild boar and hog deer.

Return to the lodge early evening for supper and overnight.



NB. Please note that, while leopard and tiger are present in Dudhwa & Kishanpur and with healthy populations, due to the dense vegetation and the scale of the park, big cat sightings are rarer than in many of India's more popular tiger parks.

Day 6: Katarniaghat Wildlife Sanctuary, Dudhwa

Today will be spent exploring the Katarniaghat Wildlife Sanctuary, part of the greater Dudhwa Tiger Reserve, on a full-day safari.



Located on the Indo-Nepal border, Katarniaghat constitutes 400 square kilometres of sal and teak woodlands, wetlands and swamps. Declared a wildlife sanctuary in 1975, today Katarniaghat forms part of the Dudhwa Tiger Reserve along with Dudhwa National Park and Kishanpur Wildlife Sanctuary. The sanctuary also forms an important corridor between Dudhwa Tiger Reserve and Bardia National Park in Nepal.

Chital, langur and tiger are amongst the most notable sightings in the Katarniaghat region of Dudhwa, alongside leopard, spotted deer, swamp deer and sambar. Rhino and elephant sightings are also common, while at dusk, civet and jackal sightings are possible.

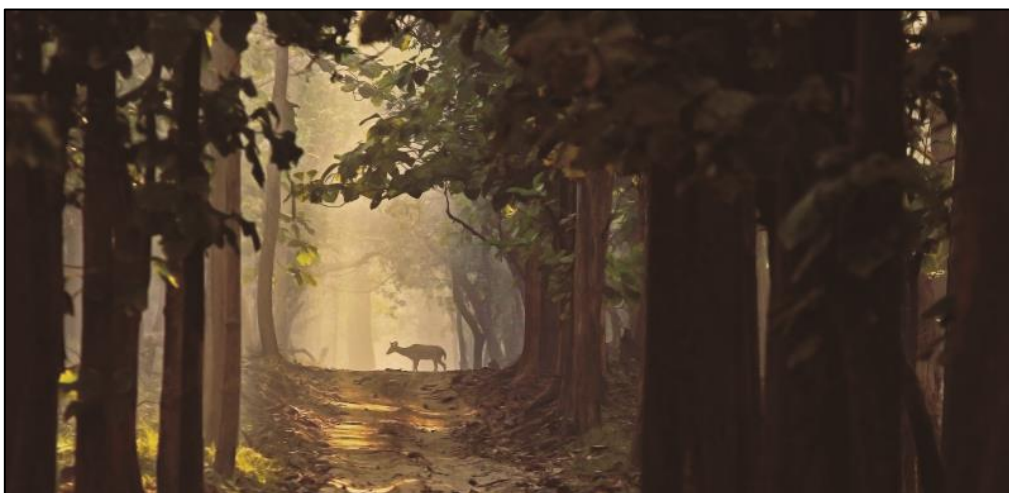
Katarniaghat is one of the few remaining reserves where gharial can be seen in the wild.

After a day spent exploring Katarniaghat, return to Jaagir Lodge for dinner and overnight.

Day 7: Pilibhit Tiger Reserve

Embark on a full-day game drive in the Pilibhit Tiger Reserve.

Pilibhit is situated west of Dudhwa and constitutes a similar mix of terai jungle, grassland and swamp, with several water bodies. It is a relatively small reserve protecting a healthy population of tiger which prey on chital, wild boar, sambar and blue bull.



You'll spend a full day exploring the reserve in search of tiger and other notable species. Late afternoon, return to Jaagir Lodge for dinner and overnight.

Day 8: At leisure

Today is at leisure to enjoy the lodge facilities and spa. If preferred, local activities can be arranged including a visit to a Tharu village.

Day 9: Dudhwa to Lucknow

After a leisurely breakfast at the lodge, set off on the return journey to Lucknow (300kms / 5 hours). On arrival into the city, check-in at the Taj Lucknow for one night (incl. breakfast).

Day 10: Lucknow to Delhi; international departure

The morning is at leisure to explore Lucknow at your own pace or relax at the hotel. After lunch, transfer to the station to board the train to Delhi (15:35/22:15), or flight if you prefer.

On arrival in Delhi, transfer to the airport to check in for your international flight home.

Price Guide:

*The cost of this itinerary is **£1,995 per person**, based two travellers in shared twin/double accommodation.*

For more information, or if you would like to enquire about a tailor-made holiday combining part or all of the above itinerary, please [contact us](#).

Includes:

- Accommodation and meals as described
- All transfers and activities as described
- English speaking guide at monuments and during the safari
- Train fare (Delhi-Lucknow return)
- All currently applicable taxes

Excludes:

- International flights
- Meals other than those specified
- Camera fee wherever levied
- Personal expenses
- Tips
- Travel insurance – ask us for a quote

